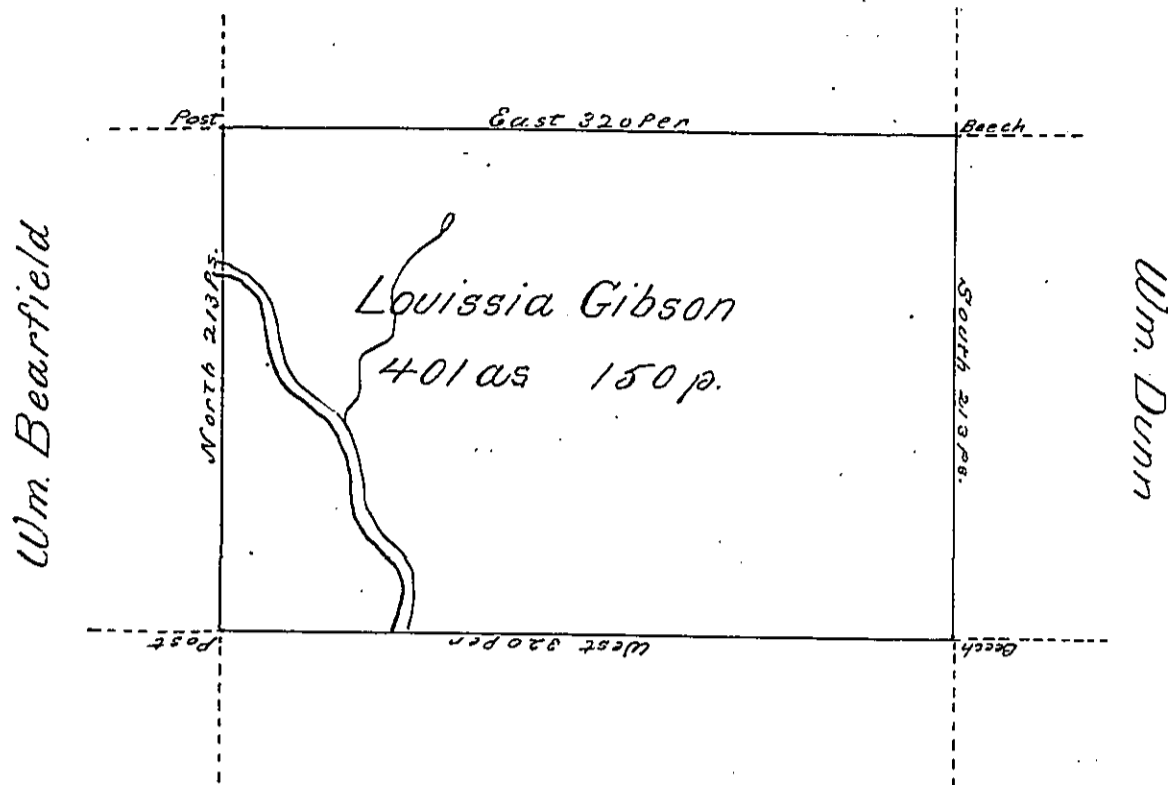


Eliza Gibson



Sally Gibson

Situate on the west side of French Creek
 in Allegheny County containing 401 acs and 150
 perches and allowance of Six Acres for Roads
 &c. Surveyed the 11th. Day of June 1795 In pursu-
 ance of a Warrant dated the 30th. day of May 1792.

Wm. Power Esq.

To Danl. Brodhead Esquire
 Surveyor General

IN TESTIMONY that the above is a copy of the original remaining on file in
 the Department of Internal Affairs of Pennsylvania, made
 conformably to an Act of Assembly approved the 16th day of
 February, 1833, I have hereunto set my Hand and caused
 the Seal of said Department to be affixed at Harrisburg,
 this third day of October 1899

James W. Latta
 Secretary of Internal Affairs.